

American Legacy Foundation

Small Innovative Grant

Application for La Crosse County Health Department

Electronically Filed

April 15, 2005

Smoking Cessation for 18-24 Year Olds, Not in Higher Education

\$99,995

John Pieper

From: Al Bliss
Sent: Friday, April 01, 2005 2:34 PM
To: Al Graewin; John Pieper
Subject: Grant Application Log

Department Name: La Crosse County Health Department, Health Education
Name of employee applying for grant: ~~Primary Author: John Pieper~~, Al Bliss, Derek Moore, Anne Winegarden, Paula Silha, Josalyn Gloyd assist (JP and AB's name are on the Legacy email account and Al Graewin is listed as Project Coordinator)
Name of the Grant: Small Innovative Grant
Name of the Grantor: American Legacy Foundation
Dollar Amount of Grant: \$99,995.00 requested
Grant year: Project Start date (anticipated) Sept. 1, 2005 though August 31, 2006 (estimated)
Was the grant identified or located through eCivis? No

Al Bliss, Health Educator
La Crosse County Health Department
300 N 4th St
La Crosse, WI 54601
Phone: 608 789-4820 (Direct)
Email: bliss.al@co.la-crosse.wi.us
Fax: 608 785-9846

Small Innovative Grants Initiative Organization Information

Name of Institution Submitting Proposal
La Crosse County Health Department

Legal Name of Institution
(If different from above institution name.)
La Crosse County Health Department

Also Known As
La Crosse County Health Department

Street Address of Organization
300 North 4th Street

City
La Crosse

State
WI

Postal Code
54601

Main Telephone Number
608 785-9872

Main Fax Number
608 785-9846

Employer Identification Number
396005709

Organization Type
(Please select the appropriate description.)
Local Public Entity

Mission Statement
The Mission of the La Crosse County Health Department is to improve the quality of life and health of all people in La Crosse County.

Total Annual Budget
(For the current fiscal year.)
\$4,220,000.00

Tax Registration Date
January 01, 1917

Previous Application Submitted
Priority Populations Initiative

Previous Grant Awarded
\$328,824

Prev_Grant_Organization_Name
La Crosse County Health Department

Legal Applicant Contact Information

Prefix
Mr.

First Name
Doug

Middle Initial

Last Name
Mormann

Suffix
MPH

Title
Health Director

Office Address
300 North 4th Street

Office City

La Crosse

Office State

WI

Office Postal Code

54601

Office Phone

608 785-9807

Office Fax

608 785-9846

Extension

E-mail

mormann.doug@co.la-crosse.wi.us

WWW Address

www.co.la-crosse.wi.us/Health

Project Contact Information

Prefix

Mr.

First Name

Al

Middle Name

Last Name

Bliss

Suffix

BS, Health Educator

Title

Health Educator

Office Address
300 North 4th Street

Office City
La Crosse

Office State
WI

Office Postal Code
54601

Office Phone
608 789-4820

Extension

Office Fax
608 785-9846

E-mail
bliss.al@co.la-crosse.wi.us

Fiscal Contact Information

Prefix
Mrs.

First Name
Camile

Middle Name

Last Name
Ellenz

Suffix

Title

Financial Manager

Office Address

300 North 4th Street

Office City

La Crosse

Office State

WI

Office Postal Code

54601

Office Phone

608 785-9845

Extension

Office Fax

608 785-9846

E-mail

ellenz.camille@co.la-crosse.wi.us

Project Cover Sheet

Proposal Information

Project Title

Street Outreach Tobacco Control for 18-24 Year Olds

Request Date

September 01, 2005

Request Amount

\$99,982.00

Project Budget

(What is the total budget for the project?)

\$99,982.00

Project Start Date

September 01, 2005

Project End Date

August 31, 2006

Type of Support

Project Support

Project Description

(Please provide a succinct description of the intent of your project in sixty-five (65) words or less.)

LCHD will increase the use of smoking cessation services among La Crosse County 18-24 year olds primarily not in higher education; to increase awareness of smoking cessation programs in disparate populations; and to change smoking norms and policies in the community.
LCHD will collaborate with UW-CTRI and community organizations to provide tobacco prevention, cessation and education in La Crosse County and to accomplish program objectives.

Grant Intent

(Please select the type of intent that describes the proposed project.)

Population Interventions-Other Individual Interventions

Program Area

(Please identify the primary and secondary (if appropriate) Foundation Goal the project will address.)

Cessation

Target Population

(Please describe the population that will benefit from this project.)

Age Group

(Please identify the primary and secondary (if appropriate) age populations the project will target.)

Young Adults (18-24)

Young Adults (18-24)

Gender

All

Ethnicity

(Please identify the primary and secondary (if appropriate) populations the project will target.)

Caucasian

Asian American

Population Type

(Please identify the primary and secondary (if appropriate) populations the project will target.)

Low Socioeconomic Status

Rural

Exposure to Tobacco

(Please identify the target population's exposure to tobacco products.)

All Smoked

Attachments

Title	File Name
Executive Summary	Executive Summary SIG April1.doc
Budget Form	budget_request_template 1.xls
Budget Narrative	Budget Narrative 4-1405 Al B (5).doc
Appendix Items	Resume.Al B Improveddoc
Appendix Items	Biographybreslin.doc
Appendix Items	Derek Moore resume.doc
Program Description and Narrative Form	Narrative April 15.rtf
Appendix Items	Template Timeline Custom 4- 15 JP.doc

Executive Summary

The health consequences of tobacco use have been known for decades. Cessation programs are available but awareness of the programs by 18-24 year old smokers is lacking. Of all the demographic groups that use tobacco, the 18-24 year old, low socioeconomic status, not in higher education demographic has the highest use rate but it has the lowest rate of use of cessation services.

According to the Wisconsin Behavioral Risk Factor Surveillance Survey (BRFSS), La Crosse County has an overall smoking rate of 30%, higher than the state average of 23.3%. Also, Wisconsin Tobacco Facts, 2004, states that 41.5% of 18-24 year olds whose household income is less than \$25,000 are tobacco users.

Gaining access to this population is difficult because they are no longer concentrated in any central location. The La Crosse County Health Department (LCHD) intends to reach this population through various access points in their daily lives. Example of these would be bars, beauty schools and workplaces. Since a fair number people in this population are already parents and are considered low socioeconomic status, a second route of entry to this population is community service providers. Through Coulee Community Action Program, Family & Children's Center, Family Resource Center, and the University of Wisconsin- La Crosse Self Sufficiency Project, LCHD will be able to work with families who otherwise have little opportunity to learn about available cessation services and the effects of environmental tobacco smoke. Western Wisconsin Technical College (WWTC) will work with LCHD to present the availability of tobacco use cessation programs to the students there.

LCHD will be working towards the following goals:

1. Increase the use of smoking cessation services by 18-24 year olds not currently in higher education.
2. Work to increase the accessibility of tobacco cessation materials and policy awareness at businesses that employ a significant number of 18-24 year olds and in areas the target audience frequents.
3. Using established successful community infrastructures, LCHD will provide training and educational assistance to disparate populations through community agencies.
4. Publish evaluation and key findings

Major activities under these goals would be:

- Increase the number of Tobacco Quit Line calls by 18-24 year olds
- Incorporate cessation information into educational presentations at parenting classes and parenting education home visits.
- Work with business managers to implement smoke-free worksite policies

La Crosse County Health is a full service Level III department with 67 employees and a budget of \$4.22 million. It currently manages 35 grants totalling \$3 million and receives funding from both state and national agencies.

Budget requests for this grant are \$99,995. Use of funds will be \$72,476 for project coordinator and evaluator and \$13,500 for subcontracts and mini grants, this includes two WWTC students to help recruit target population and conduct activities. Other OTPS line items total \$4250. Travel is budgeted at \$2350 and indirect costs are \$7,406.

Statement of Need and Rationale

The health consequences of smoking have been known for decades. Tobacco use has been found to cause or contribute to various health complications including lung and other cancers, chronic obstructive pulmonary disease, heart disease, and emphysema.¹

In the Wisconsin Department of Health and Family Services (DHFS) western region, which includes La Crosse County; the smoking rate is the state's highest (28%)². Within La Crosse County the overall smoking rate is 30%³, higher than the state average of 23.3%.⁴ Also, smoking rates in La Crosse County are substantially behind the 12% Wisconsin Healthy People Goal³. La Crosse County Health Department (LCHD) will be targeting 18-24 year olds including those lower socioeconomic status (SES) individuals who reside, work, or socialize in La Crosse County. The purpose of this grant is to produce a reproducible tobacco cessation program for this population. Since this population does not generally assemble in large groups for extended periods of time as college students do, LCHD will create programs at locations and develop mechanisms to access this population.

What is the target population and what are its characteristics?

The target population is La Crosse County tobacco users, residents, 18-24 years old, not enrolled in higher education. Within this age group are disparate populations, including the underemployed, Among members of the target population, young parent couples, single parents, and others utilizing community service organizations.

The study would focus on access points to this population. One subset of the target population would be 18-24 year old parents who have infants and small children. Due to the exposure of their children to environmental tobacco smoke (ETS) and the documented effects of ETS on childhood health⁵, it is especially important that the needs of this subset of the target population be addressed.

LCHD will work to increase the accessibility of tobacco cessation awareness at businesses employing a significant number of 18-24 year olds. Since this population often works at or frequents

establishments that allow smoking, they are exposed to second hand smoke occupationally as well as socially.

LCHD also will utilize successful established community infrastructure to access the lower SES 18-24 year old target population. As of the application date, LCHD has verbal agreements with four community service agencies. These agencies are: La Crosse Family and Children's Center (which runs the court mandated Healthy Families Program), Family Resources (which offers community parenting programs), Coulee Community Action Program (Coulee CAP) (offering housing services and consumer education to the rural target population), and the University of Wisconsin-La Crosse Self Sufficiency Program (SSP), a preparation program for low SES single parents preparing to enter college. All of LCHD's community service agency partners have programs in which educators or caseworkers have established long-term relationships with their clientele including a significant proportion of 18-24 year olds. Trust and long term working relationships are important in being able to move the cessation process forward once the individuals have been exposed to the available programs. As an example, Family and Children's Center currently has 74 participants in its Healthy Families Program who are in the target population. Family and Children's home educators make an average of 30 visits per year to each participant for up to three years. LCHD would train the home educators for Family and Children's Center, Family Resources and Coulee CAP to introduce cessation awareness and accessibility to tobacco use prevention services for their clientele, while providing direct intervention to the clientele. SSP educational programs would be handled by LCHD staff.

LCHD will also partner with Western Wisconsin Technical College (WWTC). Pat Breslin, WWTC's Alcohol, Tobacco and Other Drugs (ATOD) Prevention Facilitator has agreed to work with the student target population to encourage enrollment in smoking cessation programs. Breslin will recruit two members of the target population to provide awareness of cessation services and distribute related material in settings where 18-24 year olds frequent in addition to acting as liaisons between LCHD and the target population.

S:\Education\John PASIG Grant 2005\SIG Transmit\Narrative April 12.doc
Last printed 4/18/2005 9:20:00 AM

Documented Proof to Support the Argument.

Between 1996-2000 there were 136 smoking-related deaths in La Crosse County (15% of all deaths) accounting for \$31,550,000 in direct health care costs.⁶

Eighteen to twenty-four year olds comprise 35% of all smokers in Wisconsin and 41.5% of 18-24 year olds whose household income is less than \$25,000 are smokers.⁷

Area Existing Programs

Local tobacco cessation programs and support do exist, however, activities specifically targeting this population are lacking. Current tobacco cessation programs that La Crosse County residents can look to for support include: Wisconsin Tobacco Quit Line and the Fax to Quit Program, tobacco cessation programs at two local hospitals, tobacco cessation program at a local pharmacy (Medicine Shoppe), first Breath prenatal smoking cessation program, HABIT (Hmong Against Big Industry Tobacco).

Building on Existing Knowledge and Enhancing Cessation and Prevention Efforts

This program would enhance existing cessation efforts by:

- Encouraging 18-24 year olds to utilize existing cessation services.
- Working with businesses that employ 18-24 year olds to encourage smoke-free environments and offer cessation referral services.
- Partnering with community service agencies that already have successful behavior modification and education infrastructure programs to provide cessation material and access to services.

What resources are currently available, including financial and in-kind support?

LCHD will provide office space, computers and communications in-kind. Administrative support will be available from La Crosse County. Coalition support is available from two local hospitals, two local universities and the University of Wisconsin-Center for Tobacco Research and Intervention (UW-CTRI). Assistance will also be available from the La Crosse Area Health Initiative (LAHI) coalition

S:\Education\John P\SIG Grant 2005\SIG Transmit\Narrative April 12.doc
Last printed 4/18/2005 9:20:00 AM

whose members include three physicians, the La Crosse Area School District, Dr. Gary Gilmore, of the University of Wisconsin, La Crosse, and Western Wisconsin Technical College partners.

Goals and Objectives

All work on objectives and strategies will be done under the supervision of Al Graewin, C.H.E.S., LCHD Health Education Manager. Primary health educator on the project will be Al Bliss, Health Educator (.8 FTE effort). Results and Evaluation will be done by Derek Moore, LCHD staff epidemiologist (.2 FTE effort). Two members of the target population will be hired in coordination with Pat Breslin, WWTC, part time, temporary help to perform duties such as delivering published material and record keeping.

To help shape and determine the goals for this grant, LCHD funded three focus groups of seven to eight persons each that were members of the target population. La Crosse County funding amounted to \$750 plus 51 hours preparation in-kind by LCHD staff. The major findings of the focus groups included a rejection of traditional tobacco cessation ads using radio. Thus, money for radio advertising is not included in the budget and instead LCHD will be focusing on other media, such as pamphlets, and distributed materials at established businesses. The focus groups also encouraged the creation of events such as smoke-free nights at local taverns and businesses. In addition the groups strongly embraced the concept of education about access to cessation services, including programs they may be eligible for to provide partial funding and counseling for tobacco replacement services and products.

Overarching Goal:

To reduce tobacco use by 18-24 year olds living or working in La Crosse County not enrolled in higher education programs.

Goal One:

Increase access of smoking cessation services and awareness among 18-24 year olds not enrolled in higher education programs.

Objectives:

- By July 31, 2006, LCHD will document an increased use of Wisconsin Tobacco Quit Line calls and Fax to Quit usage by 18-24 year olds in La Crosse county.
- By December 31, 2005, LCHD will improve accessibility by developing partnerships with at least eight community agencies or businesses to offer tobacco cessation literature (i.e. Fax to Quit) for the target population.
- By January 31, 2006, LCHD will distribute smoking cessation awareness materials at locations where 18-24 year olds not enrolled in higher education frequent, such as taverns, pool halls, bowling alleys, community-based events, and other sites identified by focus groups and previous research.

Activities:

- Number of calls to the Wisconsin Tobacco Quit Line and number of Fax to Quit clients ages 18-24 in La Crosse County between August 1, 2004, and July 31, 2005, will be documented for baseline information.
- Similar data from September 1, 2005 to August 31, 2006, will be compared to demonstrate a significant increase in the usage of both the Wisconsin Tobacco Quit Line and Fax to Quit. Data will be collected periodically to monitor progress.
- By December 31, 2005, LCHD will sign a Memorandum of Understanding (MOU) with at least eight community agencies or businesses to provide tobacco cessation information to the agencies in exchange for making the information (e.g. pamphlets, literature, and videos) available to their clients stressing free or low cost services.
- Throughout the project, LCHD will work with the University of Wisconsin-Center for Tobacco Research and Intervention (UW-CTRI) to develop the program materials available for clients based on U.S. Public Health Service Clinical Guidelines for Treating Tobacco Use and Dependence.⁸
- By December 31, 2006, LCHD will identify potential sites that the target group patronizes through focus groups and other previous research.

- By September 30, 2005, LCHD will work with Western Wisconsin Technical College (WWTC) or another community organization to recruit two persons in the target group to distribute the localized cessation awareness campaign materials throughout the community, including WWTC and sites previously identified by LCHD.

Goal Two:

Work to increase the accessibility of tobacco cessation materials and policy awareness at businesses that employ a significant number of 18-24 year olds and areas where the target audience frequents.

Objectives:

- By July 31, 2006, LCHD will work with at least 12 worksites that employ a significant number of 18-24 year olds to offer tobacco cessation education.
- By July 31, 2006, LCHD will educate at least 12 worksites that employ a significant number of 18-24 year olds on smoke-free policy implementation benefits.
- By July 31, 2006, LCHD will educate at least 6 businesses that the target group frequents, such as bars, bowling alleys, and community events on implementation of smoke-free events and policies.

Activities:

- By July 31, 2006, LCHD will provide educational services, including educational classes, sessions (both group and one-on-one meetings), literature, videos, or other materials as needed to at least 8 worksites. If applicable, LCHD will utilize human resource and/or occupational health divisions at the worksites to promote the program.
- By July 31, 2006, LCHD will work with at least 6 organizations and businesses whose clientele includes a sizable number of the target audience to educate them on the benefits of smoke-free events and policies, such as smoke-free bar nights and smoke-free grounds at festivals.

Goal Three:

Using established successful community infrastructures, LCHD will provide training and educational assistance for disparate populations through community agencies.

Objectives:

- By March 31, 2006, LCHD will train caseworkers and home educators to present free or low-cost cessation options to at least 50 low-SES families in the target group.
- By July 31, 2006, the target group will be measured on smoking attitudes and norms before and after education by the community agencies.

Activities:

- By November 30, 2005, LCHD will train caseworkers and home educators (with quarterly follow-up) for four community agencies as to the cessation programs available to the target population (Family & Children's Center, Family Resources, Coulee CAP, and the UW-La Crosse Self Sufficiency Program (SSP targets low SES mothers preparing to enter college). Training will be provided in conjunction with UW-CTRI.
- Throughout the grant LCHD will coordinate the activities of the four community agencies to provide education, including free or low-cost cessation options, to at least 50 low-SES families in the target group.
- By November 30, 2005 LCHD will develop a survey encompassing smoking prevalence, knowledge, and attitudes in the families in the target groups.
- The survey will be distributed to the target population at baseline and after intervention to determine significance of change in smoking attitudes and norms.

Goal Four:

Publish evaluation and key findings.

Objective:

- At the conclusion of the program year objectives, LCHD will complete evaluation of findings and publish both results and conclusions in newsletters and peer-reviewed journals.

Activities:

- At the conclusion of the first-year objectives, LCHD will provide a summary report including evaluations of the efficacy of the objectives and whether smoking attitudes and norms were changed significantly in the target population.
- LCHD will publish initial findings in the UW-CTRI newsletter.
- LCHD will also submit final statistics and conclusions in one or more articles to a peer-reviewed health journal for publication.
- Once the program evaluation is available for release, LCHD will disseminate the findings to area media outlets and community groups and leaders.

Organizational Capacity

La Crosse County, Wisconsin is located 150 southeast of Minneapolis on the Mississippi river. The La Crosse County Health Department is a full service Health Department with 67 employees and a budget of \$4.22 million serving a mix of urban/rural areas with a population of 107,040.

LCHD is a Level III Health Department; the highest rating achievable in Wisconsin. LCHD currently manages 35 grants totaling \$3 million and receives both state and federal funding.

LCHD works in Environmental Health, Laboratory, Nutrition, Public and Home Care Nursing, Communicable Disease investigation, Health Education and Public Health Preparedness. LCHD has a double journal entry system and is audited on an annual basis.

LCHD previously received two grants from American Legacy Foundation's Priority Populations Initiative to work with the area Hmong population to reduce tobacco use in teens and adults. Legacy funds included a \$50,000 pilot award from September 2002-August 2003, leading to a \$328,000 award for continuation of the Hmong Against Big Industry Tobacco (HABIT) program for two additional years. Since the program's inception in 2002, the smoking rate among Hmong adults in the La Crosse County area has dropped from 17% to 9%⁹. Over 150 former smokers from the Hmong community have participated in cessation programs. Among other projects under this grant, LCDH has collaborated with UW-CITRI to promote Wisconsin Tobacco Quit Line services to the local Hmong community and

S:\Education\John P\SIG Grant 2005\SIG Transmit\Narrative April 12.doc
Last printed 4/18/2005 9:20:00 AM

developed a smoking cessation video for adults in the Hmong language. To date LCHD has distributed more than 80 videos worldwide.¹⁰

La Crosse County Health Department serves as fiscal agent for the La Crosse Area Health Initiative (LAHI). LAHI, founded in 1992, has been involved in numerous tobacco prevention and control campaigns in the greater La Crosse area. LAHI is the recognized tobacco control and prevention coalition serving La Crosse County. Community partners now include 20 agencies, schools, voluntary groups and private citizens working to control and prevent the negative effects of tobacco use in La Crosse County. The following examples demonstrate LCHD/LAHI's ability to accomplish community change in tobacco prevention and control activities:

- Developed and supported passage of smoke-free dining ordinances in the City of La Crosse (1999), City of Onalaska, Village of Holmen, Village of West Salem (2002) and La Crosse County (2002).
- La Crosse was one of five Wisconsin pilot sites to receive Thomas T. Melvin grant funds (\$25,000 per year) to establish Teens Against Tobacco Use (TATU) programs in area schools.
- Conducted an initial survey of smoke-free worksites and supported education and outreach. Registered smoke-free worksites have increased from 100 in 1993 to 725 in 2005.
- LCHD has conducted cigarette sales compliance checks since 1994.

Sustainability

LCHD believes the funding from Legacy can be used to find access points into the 18-24 year old low SES population. The findings will be used to educate community caregivers to make clients aware of low or no cost cessation programs available to them. This is especially important for young parents whose children are exposed to second hand smoke. Once caregivers are trained to incorporate this information into their daily client contact routine further funding for caregiver education would be minimal.

. Data gathered under this grant will allow LCHD to focus on work sites that employ or cater to this population. Publication of the findings of this program will allow other community groups to focus their energy more efficiently on the 18-24 year old not in higher education tobacco use population.

Citations

-
- ¹ Tobacco John A Barron & Thomas E. Rohan pp 269-289; Cancer Epidemiology and Prevention, 2nd Ed. David Schottenfeld, M.D. and Joseph F. Fraumeni, Jr. M.D. New York, Oxford, Oxford University Press, 1996
- ² Percentage of Current Smokers, Wisconsin 2002, Wisconsin Behavioral Risk Factor Survey, 2002, Department of Health and Family Services, Division of Health Care Financing, Bureau of Health Information
- ³ <http://www.dhfs.state.wi.us/localdata/pdf/2010data/lacrosse.pdf>
- ⁴ Percentage of Adults who Smoke by Year: Wisconsin vs. U.S., 1990-2002, Wisconsin Behavioral Risk Factor Survey, 2002, Department of Health and Family Services, Bureau of Health Information Behavioral Risk Factor Surveillance System, U.S. Centers for Disease Control and Prevention: <http://www.cdc.gov/brfss>
- ⁵ CDC Tobacco Information and Prevention Source (TIPS), http://www.cdc.gov/tobacco/research_data/environmental/factsheet_ets.htm
- ⁶ Smoking Related Deaths and Direct Health Care Costs by Wisconsin County, 1996-2000 Annual Average, Centers for Disease Control and Prevention. Smoking Attributable Morbidity, Mortality and Economic Costs (SAMMEC): Adult SAMMEC software. Calculation was performed on April 10th and 11th, 2002.
- ⁷ Characteristics of Current Cigarette Smoking by Age, 1998-2002, Wisconsin Behavioral Risk Factor Survey, 1998-2002, Department of Health and Family Services, Division of Health Care Financing, Bureau of Health Information
- ⁸ See appendix for letter of support
- ⁹ LCHD Internal Communication

Budget Narrative

Personnel

Project coordinator	Health Educator - 32 hours per week @ \$23 per hour (does not include fringe benefits)	\$38,272
Project Evaluator	PT - 7.5 hours per week @ \$25 per hour (does not include fringe benefits)	\$ 9,750
Staff fringe	Fringe @ 56% of salary for PC (\$21,432) and @ 31% for Evaluator (\$3,022)	\$24,454
Staff training		0
Other	Sub contracts / mini grants to 5 agencies to complete grant objectives (Western Wisconsin Tech College, one of the 5 agencies, will employ 2 part-time work study students to help recruit target population and conduct activities)	\$13,500
Total		\$85,976

Other than personal support (OTPS)

Evaluator Contractor	Evaluation done in house by staff epidemiologist	
Equipment		0
Educational Materials		\$1,000
Photocopies and duplication	Promo items including posters, flyers, etc for worksites and agencies working with target population	\$1,500
Postage		\$ 750
Supplies		\$1,000
Other		0
Total		\$4,250

Travel

Air and Ground Transportation		\$900
Lodging	Legacy Conference training for Outreach Positions	\$ 500
Meals	Meals for program staff and meetings with worksites and subcontract agencies. Meals also for staff attending technical training and assistance through CTRI (Centers for Tobacco Research and Intervention)	\$ 500
Other	Registration for conferences	\$ 450
Travel Total		\$2,350

Total Direct Expenses		\$92,576
Indirect (Maximum 8%)		\$7,406
TOTAL		\$99,982



American Legacy Foundation

Template Timeline Objective Chart

1001 G Street, N.W.
Suite 800
Washington, D.C. 20001
(202) 454-5555
(202) 454-5599 (FAX)

Overarching Goal:

To reduce tobacco use by 18-24 year olds living or working in La Crosse County, not enrolled in higher education programs.

Goal One: Increase access of smoking cessation services and awareness among 18-24 year olds not enrolled in higher education programs.

Objectives:

- By July 31, 2006, LCHD will document an increased use of Wisconsin Tobacco Quit Line calls and Fax to Quit usage by 18-24 year olds in La Crosse county.
- By December 31, 2005, LCHD will improve accessibility by developing partnerships with at least eight community agencies or businesses to offer tobacco cessation literature (i.e. Fax to Quit) for the target population.
- By January 31, 2006, LCHD will distribute smoking cessation awareness materials at locations where 18-24 year olds not enrolled in higher education frequent, such as taverns, pool halls, bowling alleys, community-based events, and other sites identified by focus groups and previous research.

Activities to Accomplish Objective (bulleted steps)	Lead Role	Time Line (in months)												Measures of Success (indicators)																																																																																																																													

the target group to distribute the localized cessation awareness campaign materials throughout the community, including WWTC and sites previously identified by LCHD.

Goal Two: Work to increase the accessibility of tobacco cessation materials and policy awareness at businesses that employ a significant number of 18-24 year olds and areas where the target audience frequents.

- By July 31, 2006, LCHD will work with at least 12 worksites that employ a significant number of 18-24 year olds to offer tobacco cessation education.
- By July 31, 2006, LCHD will educate at least 12 worksites that employ a significant number of 18-24 year olds on smoke-free policy implementation benefits.
- By July 31, 2006, LCHD will educate at least 6 businesses that the target group frequents, such as bars, bowling alleys, and community events on implementation of smoke-free events and policies.

Activities to Accomplish Objective (bulleted steps)	Lead Role	Time Line (in months)	Measures of Success (indicators)

<p>By July 31, 2006, LCHD will provide educational services, including educational classes, sessions (both group and one-on-one meetings), literature, videos, or other materials as needed to at least 8 worksites. If applicable, LCHD will utilize human resource and/or occupational health divisions at the worksites to promote the program.</p>	Health Educator	1	2	3	4	5	6	7	8	9	10	11	12
		Sept	Oct	Nov	Dec	Jan	Feb	Mar	Apr	May	Jn	Jl Jul 31	Aug
													<p>LCHD will have records showing at least 12 worksites having offered cessation programs</p>

<p>By July 31, 2006, LCHD will work with at least 6 organizations and businesses whose cliental includes a sizable number of the target audience to educate them on the benefits of smoke-free events and policies, such as smoke-free bar nights and smoke-free grounds at festivals.</p>	Health Educator										<p><Jul 31</p>	<p>LCHD will have records showing educational sessions with at least 6 organizations</p>
<p>Goal Three: Using established successful community infrastructures, LCHD will provide training and educational assistance for disparate populations through community agencies.</p>												
<p>Objectives:</p> <ul style="list-style-type: none"> By March 31, 2006, LCHD will train caseworkers and home educators to present free or low-cost cessation options to at least 50 low-SES families in the target group. By July 31, 2006, the target group will be measured on smoking attitudes and norms before and after education by the community agencies. 												
<p>Activities to Accomplish Objective (bulleted steps)</p>	Lead Role	Time Line (in months)									Measures of Success (indicators)	

<p>By November 30, 2005, LCHD will train caseworkers and home educators (with quarterly follow-up) for four community agencies as to the cessation programs available to the target population (Family & Children's Center, Family Resources, Coulee CAP, and the UW-La Crosse Self Sufficiency Program (SSP targets low SBS mothers preparing to enter college). Training will be provided in conjunction with UW-CTRI.</p>	<p>Health Educator</p>	1	2	3 <Nov 30	4	5	6	7	8	9	10	11	<p>12 Aug</p> <p>LCHD will have documentation showing training sessions with the home educators and case workers of the community partners</p>
		Sept	Oct	Nov	Dec	Jan	Feb	Mar	Apr	May	Jn	Jl	

<p>Throughout the grant LCHD will coordinate the activities of the four community agencies to provide education, including free or low-cost cessation options, to at least 50 low-SES families in the target group.</p>	<p>Health Educator Evaluators</p>	<p>Sept 1 ></p>	<p><Nov 30</p>					<p><August 31</p>	<p>LCHD will have documented education sessions with 50 low SES families in the target group</p>
<p>By November 30, 2005 LCHD will develop a survey encompassing smoking prevalence, knowledge, and attitudes in the families in the target groups.</p>	<p>Evaluator</p>							<p><August 31</p>	<p>LCHD will have developed a survey for the families in the target group</p>

The survey will be distributed to the target population at baseline and after intervention to determine significance of change in smoking attitudes and norms.	Health Educator Evaluator															LCHD will have results of surveys in hand
--	---------------------------	--	--	--	--	--	--	--	--	--	--	--	--	--	--	---

Goal Four:
Publish evaluation and key findings.

Objective:
At the conclusion of the program year objectives, LCHD will complete evaluation of findings and publish both results and conclusions in newsletters and peer-reviewed journals.

Activities to Accomplish Objective (Bulleted steps)	Lead Role	Time Line (in months)												Measures of Success (indicators)
		1	2	3	4	5	6	7	8	9	10	11	12	
		Sept	Oct	Nov	Dec	Jan	Feb	Mar	Apr	May	Jn	Jl	Aug	

<p>At the conclusion of the first-year objectives, LCHD will provide a summary report including evaluations of the efficacy of the objectives and whether smoking attitudes and norms were changed significantly in the target population.</p>	<p>Evaluator</p>								<p><Sept 30 LCHD will provide summary report on efficacy of objectives to Legacy</p>
<p>LCHD will publish initial findings in the UW-CTRL newsletter.</p>	<p>Health Educator</p>								<p>>Sept 30 Published findings</p>
<p>LCHD will also submit final statistics and conclusions in one or more articles to a peer-reviewed health journal for publication.</p>	<p>Evaluator</p>								<p>>Sept 30 Submitted findings</p>
<p>Once the program evaluation is available for release, LCHD will disseminate the findings to area media outlets and community groups and leaders.</p>	<p>Health Educator</p>								<p>>Sept 30 Reports and news releases</p>

Alan P. Bliss

4004 Old Town Hall Road
La Crosse, WI 54601
(608) 788-8875

OBJECTIVE

To obtain a position as a Health Educator focusing on public health and management.

SUMMARY OF QUALIFICATIONS

- Authored successful grant proposals for tobacco control and other programs totaling more than \$560,000
- 9 years experience in employee health and safety training to businesses.
- Conducted over 2000 hours of teaching and classroom experience on CPR, tobacco prevention, HIV/AIDS and other public health topics.
- Provided OSHA Blood borne Pathogen training to private and public businesses.

HONORS AND AWARDS

Presented at the following national and state conferences:

- National Conference on Tobacco or Health, Dec 2003, Boston, MA (Panel: Smoking cessation issues for Vietnamese, Korean, Hmong, and Chinese Americans)
- 9th Annual Hmong National Conference, Apr 2004, Washington, DC (Strategies to reduce tobacco use and exposure to secondhand smoke in the Hmong community)
- APPEAL (Asian Pacific Partners for Empowerment and Leadership) National Conference Sept 2004 (Panel: Comprehensive Cessation Strategies)
- WI Tobacco Prevention and Control Conference, April 2004, Madison, WI (Panels: 14% WI Youth = 86% of the Solution: Engaging youth into tobacco free coalitions and Addressing tobacco disparities in the Hmong community: Best Practices)
- WI Tobacco Prevention and Control Conference, Apr 2003, Madison, WI (Panels: Strategies to reduce tobacco use and exposure to secondhand smoke within the Southeast Asian populations and Youth Empowerment: Engaging youth in tobacco control and advocacy)

Awards received:

- "Unsung Hero Award" – 2002 Taking Tobacco Control Into the Future, For commitment and leadership to eliminate disparities related to tobacco use at the 2002 WI Tobacco Control Conference
- Special Achievement Award, La Crosse County Health Department, 2002, 2001, 1998, 1997 for "Outstanding work exemplifies the best of public health services"
- Star Performer Award, La Crosse County Health Department – 2003, In recognition of valuable contributions to the health department
- Nancy Quinlisk Award – 2000, Support for youth development at the La Crosse Area Family YMCA
- 2001 Distinguished Service to Education By A Lay Person by the University of WI La Crosse, Phi Delta Kappa
- Outstanding Contribution to Youth Tobacco Prevention (Thomas T. Melvin Youth

Tobacco Prevention and Education Program 2000-2004 by the WI Department of Health and Family Services Division of Public Health

RELEVANT SKILLS AND ACCOMPLISHMENTS

- Successfully authored and received a three year grant totaling \$378,000 from American Legacy Foundation to implement tobacco prevention program western Wisconsin region (2002-2005). (One of fifty grants awarded nationwide)
- Coordination of T. Melvin Youth Tobacco Prevention and Education Program and other tobacco prevention programs in La Crosse County for 9 years.
- Implemented a free nicotine patch program for our La Crosse County employees and encouraged 25 people to enroll (2004-05)
- Coordinated team approach in grant writing with co-workers at La Crosse County Health Department (2004-05)
- Implemented a smoking cessation program for the School District of La Crosse at the high schools – (2004)
- Coordination of three HIV/AIDS advisory counsels in western Wisconsin (1995-1998)
- HIV counseling and testing of clients (1995-2002)
- Served as a statewide contact for youth tobacco prevention programs.
- Invitation by Wisconsin Tobacco Control Board (WTCB) to speak and share youth tobacco prevention programs to WTCB committees.
- Implemented first successful Hmong tobacco prevention program in Wisconsin through Centers for Disease Control grant.
- Trained employee's proper worksite practices for emergencies related to first aid and CPR.
- Educate management and workers about health and safety practices relating to blood borne pathogens.
- Conducted fitness and health screenings for businesses.
- Serve as a spokesperson and media contact for health programs.

EMPLOYMENT HISTORY

1995-present	Health Educator	La Crosse County Health Dept., La Crosse
1993-1996	Karate Instructor	La Crosse Family YMCA, La Crosse
1993-1995	Health and Safety Coordinator	American Red Cross, La Crosse
1991-1993	Youth and Adult Sports Director	Green County Family YMCA, La Crosse

EDUCATION

B.S., Community Health Education - University of Wisconsin La Crosse 1985-1990

Biography

Patrick Breslin has been the ATOD Prevention Facilitator for WWTC since the position's creation in 1990. He brought with him 15 years experience in medical, correctional, educational, and community systems. Since arriving at WWTC he has advised student clubs, provided individual counseling and support services for students, assisted in programming and course development, and generally provided direction for ATOD prevention at the college. In the larger community he has served on local, state and national planning committees and task forces, for five years was the working liaison between the US Department of Education's Network of Colleges and Universities and Wisconsin IHE's, and is an active member of the Wisconsin Technical College System ATOD Prevention Facilitator Consortium and past chair of that group. Outside of work his interests are in wilderness canoeing, the occasional foray into Community Theater, biographical and philosophical readings, and Vietnamese language and culture.

DEREK BRIAN MOORE

WORK ADDRESS: Coulee Region Public Health Consortium
La Crosse County Health Department
300 4th Street North, 2nd Floor
La Crosse, WI 54601-3228

WORK PHONE: (608) 785-6287

WORK E-MAIL: moore.derek@co.la-crosse.wi.us

HOME
ADDRESS: 1937 Victory Street
LaCrosse, WI 54601-7295

HOME PHONE: (608) 787-7448

E-MAIL: derekmoore18@hotmail.com

EDUCATION: B.S., The College of William and Mary 1993-1997
M.P.H., University of Minnesota
School of Public Health,
Division of Epidemiology 1997-1999
Vanderbilt University School of Medicine 2001-2002

Graduate GPA: 4.00
Undergraduate Major: Biology
Undergraduate Minor: Chemistry
Undergraduate GPA: 3.91 (Summa Cum Laude)
Undergraduate Major GPA: 3.97

EMPLOYMENT:

Epidemiologist, Coulee Region Public Health Consortium July 2004-present
(including La Crosse, Buffalo, Trempealeau, Jackson, and
Monroe Counties and the Ho-Chunk Nation)

Epidemiologist, Great Lakes Inter-Tribal Council, Inc. April 2003-July 2004

Supervisor, Wisconsin Emergency Preparedness Program, Great Lakes
Inter-Tribal Council, Inc. (including duties such as fiscal agent
representative, training representative, and supervising Homeland
Security Program Coordinator) Jan. 2004-July 2004

Interim Program Coordinator, Wisconsin Emergency Preparedness Program, Great Lakes Inter-Tribal Council, Inc.	Jan. 2004-May 2004
Instructor, Vanderbilt University, Department of Biological Sciences (as part of medical school elective)	Fall 2002
Instructor, Physical Science, Kentucky Governor's Scholars Program	Summer 2001
Instructor, Introduction to Epidemiology, University of Kentucky College of Allied Health	Aug. 2000- May 2001
Grant Writer and Epidemiologist, University of Kentucky Center for Health Services Management and Research and Department of Preventive Medicine	Dec. 1999- May 2001
Teaching Assistant, Epidemiology I, University of Minnesota	Winter 1999
Research Assistant, University of Minnesota, Iowa Women's Health Study	1997-1999
Research Assistant, University of South Carolina Department of Epidemiology and Biostatistics	Summer 1998
Researcher, The College of William and Mary Department of Biology, Merck/AAAS Undergraduate Summer Research Fellowship	1996

PUBLICATIONS:

Shu XO, Moore DB, Cai Q, Cheng J, Wen W, Cai H, Gao YT, Zheng W. Association of cyclin D1 genotype with breast cancer risk and survival. Submitted to Cancer Res, April 2004.

Hopenhayn C, Moore DB, Huang B, Redmond J, Tucker TC, Kryscio RJ, Boissonneault GA. Patterns of colorectal cancer incidence, risk factors, and screening in Kentucky. Southern Med J 2004; 97: 216-223.

Moore DB, Folsom AR, Mink PJ, Hong CP, Anderson KE, Kushi LH. Physical activity and incidence of postmenopausal breast cancer. Epidemiology 2000; 11: 292-296.

Zheng W, Gustafson DR, Sinha R, Cerhan JR, Moore D, Hong CP, Anderson KE, Kushi LH, Sellers TA, Folsom AR. Well-done meat intake and the risk of breast cancer. J Natl Cancer Inst 1998; 90: 1724-1729.

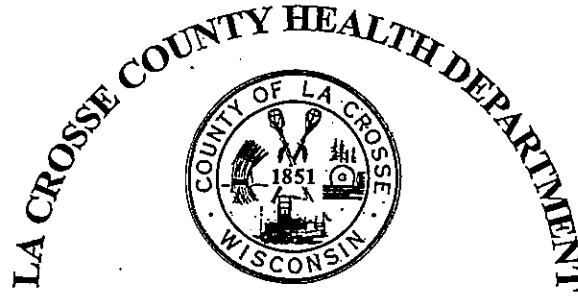
GRADUATE SCHOOL ACTIVITIES AND AWARDS

Member, Board of Directors, Open Your Heart to the Hungry and Homeless	1998-1999
Chair, Grant Review Committee, Open Your Heart to the Hungry and Homeless	1999
Member, Grant Review Committee, Open Your Heart to the Hungry and Homeless	1998-1999
Member, Grant Audit Committee, Open Your Heart to the Hungry and Homeless	1998-1999
Volunteer, Reading to Kids Program, University of Minnesota Variety Children's Clinic	1998-1999
Panelist, Young Leaders Caucus, Race Relations	February 1999

COLLEGE ACTIVITIES AND AWARDS:

Member, Phi Beta Kappa	1996-present
Thesis with High Honors, 14-3-3 protein in <i>C. elegans</i>	1996-1997
Recipient, Goldwater Scholarship for Educational Excellence	1996-1997
President, The College of William and Mary Habitat for Humanity Campus Chapter	1996-1997
Executive Council, The College of William and Mary Habitat for Humanity Campus Chapter	1995-1996
Co-Founder, The College of William and Mary Habitat for Humanity Campus Chapter	1995
Service Chair, Mortar Board, The College of William and Mary	1996-1997
Group Leader, Help Unlimited Volunteer Organization	1995-1997
Volunteer, University of Kentucky Rural Health Center	1995
Volunteer, Eastern State Mental Hospital of Virginia	1995-1996
Recipient, Ferguson Memorial Research Grant	1997
Recipient, Benjamin Stoddert Ewell Award	1997
Chemistry Research into the nature of Boronate Vinyl Esters	1993-1995
Member, Golden Key National Honor Society	1995-1997
Recipient, Marwick Scholarship for Outstanding Junior, Golden Key National Honor Society	1995
Member, Phi Sigma Biology Honors Society	1996-1997
Member, Chemistry Club	1994-1995
Member, Alpha Lambda Delta and Phi Eta Sigma Honor Fraternities	1994-1997

- Health Administration
(608) 785-9872
- Environmental Health
(608) 785-9771
- Health Education
(608) 785-9872
- Laboratory
(608) 785-9872



300 4th Street North • La Crosse, WI 54601-3299

- Nursing
(608) 785-9723
- Vector Control
(608) 785-9872
- WIC/Nutrition Services
(608) 785-9865
- TDD
(608) 785-9787
- FAX
(608) 785-9846

April 18, 2005

Jill Shalett
Grants
American Legacy Foundation
2030 M Street, NW
6th Floor
Washington, DC 20036

Dear Ms. Shalett,

Enclosed please find La Crosse County Health Department's (LCHD) additional information requested by American Legacy Foundation for the Small Innovative Grant application.

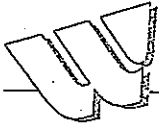
1. Letters of support (3)
2. Wisconsin State Statutes which define tax exempt status (LCHD submitted this document previously for the Priority Populations Grant Initiative, which was accepted for replacement of the 990 tax form – the county does not have a 990 form).
3. Copy of the most recent audited financial statements
4. Copy of list of Board of Directors (including their affiliations)
5. Copy of organizational chart.
6. Copy of itemized budget

Please contact me if you need further information at 608 789-4820 or bliss.al@co.la-crosse.wi.us.

Sincerely,

Al Bliss
Health Educator





April 15, 2005

To: Legacy Foundation Grant Review Committee

From: Patrick Breslin

Re: Letter of Support

Dear Review Committee:

The La Crosse County Health Department is applying to you for a tobacco prevention and intervention grant. This letter is to indicate the support of Western Wisconsin Technical College in this effort. Our college not only draws a significant portion of its students from this population but works closely with area employers through Employer Advisory Boards.

We are very willing to cooperate with the LCHD in this initiative, and very pleased that they are willing to take the lead in this endeavor. Their reputation for leadership and success in tobacco control is well known. WWTC will support efforts to reach the target population and utilize our links with the business and industry sector to promote the objectives and activities of the grant.

As the Alcohol, Tobacco, and Other Drug Prevention Facilitator with the college I have been encouraged by the Vice-President of Student Services to lend full support to the grant efforts. My office has a long established working relationship with the LCHD and partnering with them on this grant means continued health improvement for our community.

From past experience I know your approval of this grant proposal will be wise investment of your funds.

Sincerely,

Patrick Breslin

ATOD Prevention Facilitator

Western Wisconsin Technical College

304 North Sixth Street

La Crosse, Wisconsin 54601

(608) 785-9585 – Office (608) 785-9148 – Fax

breslinp@wwtc.edu

UW-CIRI

Center for Tobacco Research and Intervention • University of Wisconsin Medical School

February 18, 2005

Al Bliss, Health Educator
La Crosse County Health Department
300 North Fourth Street
La Crosse, WI 54601

Dear Al:

The University of Wisconsin-Center for Tobacco Research and Intervention (UW-CTRI) is pleased to write this letter in support of your application for an **American Legacy Foundation Small Innovative Grant**.

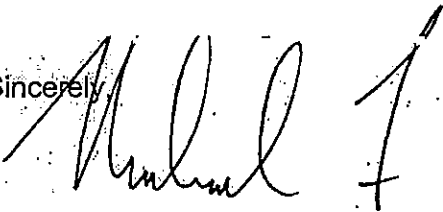
We support the goals of the proposed project to increase use of smoking cessation services among La Crosse County 18-24 year olds primarily not in higher education; to increase awareness of smoking cessation programs in disparate populations; and to change the smoking norms and policies in the community.

Specifically, UW-CTRI will work with you to:

1. Promote the Wisconsin Tobacco Quit Line among 18-24 year olds.
2. Serve as a technical and training consultant for cessation project goals and objectives.
3. Publish key findings of the project in UW-Center for Tobacco Research and Intervention newsletter.
4. Provide training and consultation to staff on how to apply the U.S. Public Health Service Clinical Guidelines for Treating Tobacco Use and Dependence within the program.

UW-CTRI has worked with the La Crosse County Health Department on many tobacco cessation collaborations in the past, including: Fax to Quit, Free Nicotine Patch Program, Technical training from Western Regional Outreach Specialist and on a project to help Among smokers quit. We look forward to the possibilities for collaboration this new grant would/tiring.

Sincerely,



Michael Fiore, MD, MPH
Professor of Medicine
Director, Center for Tobacco Research and Intervention
University of Wisconsin Medical School

FAMILY RESOURCES

Post Office Box 1897 • 122 North 7th Street • La Crosse, WI 54602-1897
Phone: (608) 784-8125 Fax: (608) 796-0098

Jodi Widuch
Executive Director

April 11, 2005

Dear Review Committee;

Family Resources is pleased to provide this letter of support for La Crosse County Health Department's application for funding from the Legacy Small Innovative Grants Program.

Family Resources and the La Crosse County Health Department have a history of working well together. In 2000 and 2001, Family Resources contracted with the La Crosse County Health Department to develop and facilitate health related workshops for child care providers to fulfill continuing education requirements. We have also worked with the Health Department to bring smoking cessation programming to the area Hmong population.

Because of these previous partnerships we are confident that Family Resources and La Crosse County Health Department will again work together effectively to achieve the goals and objectives outlined in this grant application. Family Resources provides education and support programming to parents of young children and child care providers. Our demographics show that approximately 35% of our participants fall within the targeted age range for the Legacy Small Innovative Grants. We are looking forward to integrating smoking cessation options into our programming by partnering with La Crosse County Health Department. Not only would this grant be of benefit to the program participants it would also impact the health and well being of the children in the care of these young parents.

The La Crosse County Health Department is an ideal candidate for this grant because of the quality service they provide in the community and their ability to reach out to community agencies to reach their target populations. I am happy to answer any questions that you may have.

Sincerely,

Jodi Widuch
Executive Director

Family Resources
Your Partner in Parenting

Supported by the Children's Trust Fund, La Crosse Community Foundation, La Crosse County Department of Human Services, United Way of La Crosse Area, Inc. and the Wisconsin Department of Health and Family Services

UW-CIRI

Center for Tobacco Research and Intervention • University of Wisconsin Medical School

February 18, 2005

Al Bliss, Health Educator
La Crosse County Health Department
300 North Fourth Street
La Crosse, WI 54601

Dear Al:

The University of Wisconsin-Center for Tobacco Research and Intervention (UW-CTRI) is pleased to write this letter in support of your application for an **American Legacy Foundation Small Innovative Grant**.

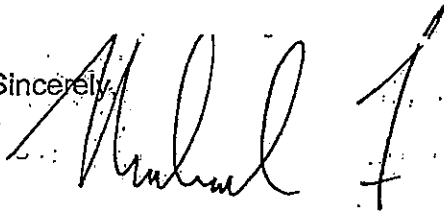
We support the goals of the proposed project to increase use of smoking cessation services among La Crosse County 18-24 year olds primarily not in higher education; to increase awareness of smoking cessation programs in disparate populations; and to change the smoking norms and policies in the community.

Specifically, UW-CTRI will work with you to:

1. Promote the Wisconsin Tobacco Quit Line among 18-24 year olds.
2. Serve as a technical and training consultant for cessation project goals and objectives.
3. Publish key findings of the project in UW-Center for Tobacco Research and Intervention newsletter.
4. Provide training and consultation to staff on how to apply the U.S. Public Health Service Clinical Guidelines for Treating Tobacco Use and Dependence within the program.

UW-CTRI has worked with the La Crosse County Health Department on many tobacco cessation collaborations in the past, including: Fax to Quit, Free Nicotine Patch Program, Technical training from Western Regional Outreach Specialist and on a project to help Hmong smokers quit. We look forward to the possibilities for collaboration this new grant would bring.

Sincerely,



Michael Fiore, MD, MPH
Professor of Medicine
Director, Center for Tobacco Research and Intervention
University of Wisconsin Medical School

LA CROSSE COUNTY
2005 BUDGET REQUEST

11/19/2004

	2002 Actual	2003 Actual	2004			2005		
			Original Budget	Actual Estimate 12 Months	Budget Request	County Admin.	Co. Board Approved	
REVENUES								
Health Admin - Summary	48,136	261,551	407,478	551,912	410,376	410,361	410,361	
Environmental Hlth - Summary	295,084	352,601	396,381	402,673	442,727	417,346	417,346	
Health Education - Summary	281,470	383,572	333,259	303,793	268,697	255,495	255,495	
Home Health - Summary	660,637	641,996	565,161	568,413	543,602	563,011	563,011	
Laboratory - Summary	120,160	125,527	108,457	109,295	119,134	112,875	112,875	
Public Hlth Nursing - Summary	935,790	198,411	183,711	190,053	343,953	332,326	332,326	
Nutrition Health - Summary	469,041	538,613	492,290	481,668	489,204	488,081	488,081	
Vector Control - Summary	18,845	39,442	46,935	61,036	26,439	24,753	24,753	
Animal License & Control	37,826	60,799	67,071	65,261	71,949	72,634	72,634	
TOTAL REVENUES	2,866,989	2,602,512	2,600,743	2,734,104	2,716,081	2,676,882	2,676,882	
EXPENSES								
Health Admin - Summary	364,680	593,060	912,412	1,007,648	784,163	763,148	763,148	
Environmental Hlth - Summary	416,880	471,669	471,843	469,068	498,022	498,022	498,022	
Health Education - Summary	370,294	401,645	438,737	383,090	393,616	388,430	388,430	
Home Health - Summary	815,193	740,913	689,329	682,514	737,143	737,143	737,143	
Laboratory - Summary	259,294	267,187	240,816	255,218	268,463	265,463	265,463	
Public Hlth Nursing - Summary	1,323,282	599,174	569,031	578,234	739,692	740,174	740,174	
Nutrition Health - Summary	567,299	588,476	562,586	599,801	628,217	628,033	628,033	
Vector Control - Summary	103,343	123,041	133,245	155,345	132,348	132,348	132,348	
Animal License & Control	66,888	65,792	67,071	68,504	74,315	75,245	75,245	
TOTAL EXPENSES	4,287,153	3,850,957	4,085,070	4,199,422	4,255,979	4,228,006	4,228,006	
TOTAL SALARY & FRINGE	3,585,896	3,234,919	3,497,408	3,383,390	3,531,582	3,521,582	3,521,582	
TOTAL OTHER EXPENSE	701,257	616,038	587,662	816,032	724,397	706,424	706,424	
TOTAL REVENUE	2,866,989	2,602,512	2,600,743	2,734,104	2,716,081	2,676,882	2,676,882	
TOTAL EXPENDITURES	4,287,153	3,850,957	4,085,070	4,199,422	4,255,979	4,228,006	4,228,006	
From Fund Balance	0	0	32,500	32,500	0	0	0	
NET LEVY	1,420,164	1,248,445	1,484,327	1,465,318	1,539,898	1,551,124	1,551,124	



**Clifton
Gunderson LLP**
Certified Public Accountants & Consultants

Independent Auditor's Report

Members of the County Board
La Crosse County, Wisconsin
La Crosse, Wisconsin

We have audited the accompanying financial statements of the governmental activities, the business type activities, each major fund, and the aggregate remaining fund information of La Crosse County, Wisconsin, as of and for the year ended December 31, 2003, which collectively comprise the County's basic financial statements as listed in the table of contents. These financial statements are the responsibility of La Crosse County, Wisconsin's management. Our responsibility is to express an opinion on these financial statements based on our audit.

We conducted our audit in accordance with auditing standards generally accepted in the United States of America and the standards applicable to financial audits contained in *Government Auditing Standards*, issued by the Comptroller General of the United States. Those standards require that we plan and perform the audit to obtain reasonable assurance about whether the financial statements are free of material misstatement. An audit includes examining, on a test basis, evidence supporting the amounts and disclosures in the financial statements. An audit also includes assessing the accounting principles used and significant estimates made by management, as well as evaluating the overall financial statement presentation. We believe that our audit provides a reasonable basis for our opinions.

In our opinion, the financial statements referred to above present fairly, in all material respects, the respective financial position of the governmental activities, the business-type activities, each major fund, and the aggregate remaining fund information of La Crosse County, Wisconsin, as of December 31, 2003, and the respective changes in financial position and cash flows, where applicable, thereof for the year then ended in conformity with accounting principles generally accepted in the United States of America.

As described in Note 18 to the basic financial statements, the County adopted the provisions of Governmental Accounting Standards Board Statement No. 34, *Basic Financial Statements - and Management's Discussion and Analysis - for State and Local Governments*; Statement No. 37, *Basic Financial Statements - and Management's Discussion and Analysis - for State and Local Governments: Omnibus*; Statement No. 38, *Certain Financial Statement Note Disclosures*; and Interpretation No. 6, *Recognition and Measurement of Certain Liabilities and Expenditures in Governmental Fund Financial Statements*, as of January 1, 2003.

The management's discussion and analysis on pages 3 through 17 and the budgetary comparison information on pages 63 through 71 are not required parts of the basic financial statements, but are supplementary information required by the Governmental Accounting Standards Board. We have applied certain limited procedures, which consisted principally of inquiries of management regarding the methods of measurement and presentation of the required supplementary information. However, we did not audit the information and express no opinion on it.

In accordance with *Government Auditing Standards*, we have also issued our report dated May 11, 2004, on our consideration of La Crosse County's internal control over financial reporting and on our tests of its compliance with certain provisions of laws, regulations, contracts, and grants. That report is an integral part of an audit performed in accordance with *Government Auditing Standards* and should be read in conjunction with this report in considering the results of our audit.

Our audit was conducted for the purpose of forming opinions on the financial statements that collectively comprise La Crosse County, Wisconsin's basic financial statements. The accompanying combining and individual fund statements and schedules (listed in the table of contents) are presented for purposes of additional analysis and are not a required part of the basic financial statements of La Crosse County, Wisconsin. Such information has been subjected to the auditing procedures applied in the audit of the basic financial statements and, in our opinion, is presented fairly, in all material respects, in relation to the basic financial statements taken as a whole.

Clifton Henderson LLP

Stevens Point, Wisconsin
May 11, 2004

LA CROSSE COUNTY, WISCONSIN
HEALTH FUND
STATEMENT OF REVENUES, EXPENDITURES, AND CHANGES IN
FUND BALANCE - BUDGET AND ACTUAL

Year Ended December 31, 2003

	Budgeted Amounts		Actual Amounts	Variance with Final Budget
	Original	Final		Positive (Negative)
REVENUES				
Property taxes	\$ 1,373,127	\$ 1,373,127	\$ 1,373,127	\$ -
Intergovernmental revenues:				
Health services	626,523	1,201,101	1,101,808	(99,293)
Nursing	15,445	37,723	36,659	(1,064)
Interdepartmental revenues	230,862	244,128	277,006	32,878
Licenses and permits-other health	370,963	370,963	368,417	(2,546)
Public charges for services:				
Health services	254,057	396,571	348,837	(47,734)
Other health	222,109	246,103	223,078	(23,025)
Miscellaneous revenues-donations	185,865	372,884	253,576	(119,308)
Total revenues	<u>3,278,951</u>	<u>4,242,600</u>	<u>3,982,508</u>	<u>(260,092)</u>
EXPENDITURES				
Health and human services:				
Administration	461,835	327,621	338,214	(10,593)
Lead poisoning	16,113	14,478	14,776	(298)
Environmental health	422,711	479,851	469,507	10,345
Bio-Terrorism	-	327,430	231,027	96,403
Health education	154,685	151,794	64,373	87,421
AIDS	-	37,500	35,817	1,683
Cardiovascular	13,653	13,653	10,401	3,252
Tobacco	176,691	383,827	265,359	118,468
Maternal Child Health	123,462	89,917	49,144	40,773
Home health and personal care	482,531	752,338	740,911	11,427
Laboratory	270,512	309,855	260,700	49,155
County public health nursing	412,457	464,127	481,429	(17,302)
Other health	91,900	135,613	102,306	33,307
Nutrition	97,366	147,556	144,720	2,836
Women, Infants and Children	285,524	324,809	320,693	4,116
Prenatal care	65,560	65,560	86,935	(21,375)
Vector control	100,568	141,991	119,086	22,905
Animal licensing and control	64,750	64,750	65,793	(1,043)
Women's health	20,974	22,429	22,788	(359)
Health capital outlay	17,659	66,519	42,555	23,964
Total expenditures	<u>3,278,951</u>	<u>4,321,618</u>	<u>3,866,533</u>	<u>455,085</u>
Excess (deficiency) of revenues over expenditures	-	(79,018)	115,975	194,993
OTHER FINANCING SOURCES				
Transfer in	-	85,982	85,982	-
Total other financing sources	<u>-</u>	<u>85,982</u>	<u>85,982</u>	<u>-</u>
Excess of revenues and other financing sources over expenditures	<u>\$ -</u>	<u>\$ 6,964</u>	201,957	<u>\$ 194,993</u>
FUND BALANCE, JANUARY 1			<u>183,373</u>	
FUND BALANCE, DECEMBER 31			<u>\$ 385,330</u>	

COUNTY SUPERVISORY DISTRICTS

DISTRICT NO.

AREA(S) REPRESENTED*

- 1-17 The City of La Crosse (All of the corresponding City Aldermanic Districts)
- 18 Part of the Town of Shelby (Wards 1, 2, 5 & 6)
- 19 Part of the Towns of Barre (Ward 2), Medary (Ward 1) and Shelby (Wards 3 & 4)
- 20 All of the Towns of Bangor, Greenfield and Washington and Part of the Town of Barre (Ward 1)
- 21 Part of the Town of Hamilton (Ward 1) and the Village of West Salem (Wards 1, 2 & 3)
- 22 Part of the Town of Hamilton (Ward 3) and the Village of West Salem (Wards 4, 5 & 6)
- 23 All of the Town of Burns and the Villages of Bangor and Rockland and Part of the Town of Farmington (Ward 3)
- 24 Part of the Towns of Farmington (Wards 1 & 2) and Holland (Wards 3 & 4)
- 25 Part of the Town of Campbell (Wards 1, 2, 3, 6 & 7) and part of the 3rd Aldermanic District in the City of La Crosse
- 26 Part of the Towns of Campbell (Wards 4 & 5) and Onalaska (Wards 3 & 4)
- 27 Part of the Town of Holland (Wards 1 & 2) and the Village of Holmen (Wards 1, 8 & 9)
- 28 Part of the Town of Onalaska (Wards 5 & 6) and the Village of Holmen (Wards 6 & 7)
- 29 Part of the Town of Onalaska (Wards 1, 2 & 7), the Village of Holmen (Ward 10) and the City of Onalaska (Ward 2)
- 30 Part of the Village of Holmen (Wards 2, 3, 4 & 5)
- 31 Part of the City of Onalaska (Wards 3, 4 & 13)
- 32 Part of the City of Onalaska (Wards 1 & 5)
- 33 Part of the City of Onalaska (Wards 6, 7, & 10)
- 34 Part of the Towns of Hamilton (Ward 2) and Medary (Ward 2) and the City of Onalaska (Ward 12)
- 35 Part of the City of Onalaska (Wards 8, 9 & 11)

* Note that Annexations or Ordinance changes may alter the area represented. Contact your Municipal Clerk for updated information.

Detailed maps of each Supervisory District are available in the County Clerks office for \$1.00 each
← RETURN TO INDEX

LA CROSSE COUNTY BOARD OF SUPERVISORS

April, 2004 — April, 2006

DISTRICT & NAME:	ADDRESS: BUSINESS PHONE / FAX:	HOME PHONE: E-MAIL:
1. Andrea Richmond	1312 Cunningham St, La Crosse WI 54603	(608) 781-4174
2. Ralph E. Geary Jr	1733 Loomis St, La Crosse WI 54603	(608) 781-0517
3. Keith Belzer	1217 Charles St, La Crosse WI 54603 Bus. Ph: (608) 784-8055 / Fax: (608) 784-8091	(608) 782-3932 keith@devaniebelzerlaw.com
4. Tong, W. Ly	723 Island St, La Crosse WI 54603	(608) 782-7131
5. Bill Schultz	1515 Pine St. #118A, La Crosse WI 54601	(608) 789-4082
6. Jill Billings	403 13th St S, La Crosse WI 54601	(608) 782-3686 jillb@fflax.net
7. Roger J. Plesha	929 King St, La Crosse WI 54601	(608) 782-1150
8. Mark Johnsrud	2823 Quarry Pl, La Crosse WI 54601 Bus. Ph: (608) 784-7632	(608) 785-0608
9. Sharon Hampson	2510 Cass St, La Crosse WI 54601	(608) 785-2022
10. Margaret Wood	1804 Cameron Ave, La Crosse WI 54601	sharonkgh@charter.net
11. Audrey Kader	715 7th St S, La Crosse WI 54601 Fax: (608) 784-0134	(608) 785-1361 (608) 784-3817
12. James A. Ehrsam	1102 14th St S, La Crosse WI 54601	audrey.kader@mindspring.com
13. Bernie Maney	2636 7th St S, La Crosse WI 54601	(608) 784-6538
14. Mitzi Parr	1632 Travis St, La Crosse WI 54601	(608) 784-2758 (608) 788-5981
15. Lyell Montgomery	3008 33rd St S, La Crosse WI 54601 Bus. Ph: (608) 796-2440 / Fax: (608) 796-2454	mlpscruffy10@aol.com (608) 787-5764
16. Gerald R. Sebranek	2902 Robinsdale Ave, La Crosse WI 54601	jmontgo327@aol.com (608) 788-4097
17. Donald F. Meyer	3619 Deerfield Pl, La Crosse WI 54601	fourpackrs@cs.com (608) 788-7907
18. Tara J. Johnson	N980 Bloomer Mill Rd, La Crosse WI 54601	tdmeyer@centurytel.net (608) 788-7970 bloomermill@msn.com

(Continued — Next Page)

← RETURN TO INDEX

LA CROSSE COUNTY BOARD OF SUPERVISORS

April, 2004 — April, 2006
Continued

DISTRICT & NAME:	ADDRESS: BUSINESS PHONE / FAX:	HOME PHONE: E-MAIL:
19. Janice Keil.....	N3433 Smith Valley Rd, La Crosse WI 54601 Bus. Ph: (608) 781-2275	(608) 781-5175
20. Donald Bina.....	N1904 Bina Rd, Coon Valley WI 54623 Bus. Ph: (608) 788-4659 / Fax: (608) 788-4659	(608) 788-4659
21. J. Terry Hanson.....	PO Box 41, West Salem WI 54669	(608) 786-2306
22. Sharon Mahlum.....	W3767 Hidden River Rd, West Salem WI 54669 Fax: (608) 786-2987	(608) 786-1481
23. Brian Kapanke.....	1427 Labus Dr., Bangor WI 54614	sharonmahlum@aol.com (608) 486-4606
24. Leon Pfaff.....	N8694 County Road DD, Holmen WI 54636	bangorbrian@aol.com (608) 526-3668
25. Jeffrey Schroeder.....	1734 La Fond Ave, La Crosse WI 54603	lrpfaff@aol.com (608) 782-7797
26. Vicki Burke.....	W8349 North Shore Dr, Onalaska WI 54650	(608) 781-0737
27. George Hammes.....	W8213 Sternford St, Holmen WI 54636	vburke0737@aol.com (608) 526-4097
28. Steve Doyle.....	N5525 Hauser Rd, Onalaska WI 54650	(608) 783-1204
29. Karl W. Halverson.....	Bus. Ph: (608) 785-9563 / Fax: (608) 789-4821	doyle.steve@co.la-crosse.wi.us (608) 783-3185
30. Charles A. Spiker.....	W6773 Abbey Rd, Onalaska WI 54650	(608) 526-4274
31. Ann H. Fisher.....	413 Lilly Ct, Holmen, WI 54636 816 6th Ave N, Onalaska WI 54650	(608) 783-6504
32. Arlene M. Benrud.....	416 5th Ave N, Onalaska WI 54650 Fax: (608) 779-1344	afishv@msn.com (608) 783-4314
33. Jim Berns.....	111 11th Ave S, Onalaska WI 54650 Bus. Ph: (608) 789-7900 Ext. 4307	arlene@peoplepc.com (608) 779-1293
34. Shirley Holman.....	N4352 Pralle Rd, Onalaska WI 54650 Fax: (608) 783-1845	(608) 783-2890
35. Joe Bilskemper.....	312 14th Ave S, Onalaska WI 54650 Bus. Ph: (608) 781-3217 / Fax: (608) 781-3273	(608) 781-8697

Updated 5/28/04

← RETURN TO INDEX

LA CROSSE COUNTY BOARD OF SUPERVISORS
COUNTY BOARD MEETINGS



Administrative Center, 400 4th St. N., Rm B410, La Crosse
 (Unless otherwise specified on the meeting agenda)

Only the South entrance will be open after 5:00 p.m.

COUNTY BOARD MEETINGS

Regularly Scheduled Monthly Meetings
 The 3rd Thursday of every month..... 6:00 P.M.

EXCEPT APRIL and NOVEMBER

The April Organizational/Reorganizational Meeting:
 The 3rd Tuesday of April..... 6:00 P.M.

The November Annual Meeting

Begins the Tuesday after the 2nd Monday in November
 Should this date fall on Veterans Day, the County Board cannot meet until the following day. Prior to this meeting, a PUBLIC HEARING on the budget will be scheduled.

County Board Policy Planning Meetings

Monday of Committee Week
 Location: HHS Auditorium, 300 N 4th St., La Crosse WI
 6:00 P.M.

Committee Week is customarily the week before County Board

Special Meetings may be called as needed

COMMITTEE WEEK AND THE MONTHLY COUNTY BOARD MEETING
 WILL BE ONE WEEK LATER DUE TO HOLIDAYS IN JULY and
 SEPTEMBER, 2004

Other changes could occur due to unforeseen circumstances.

It is advisable to consult the Calendar and Agenda on the County Web Site
<http://www.co.la-crosse.wi.us/>

Or contact the office of the
 COUNTY BOARD CHAIR or COUNTY CLERK
 For verification on all meeting locations and dates

Phone: (608) 785-9563 Email: stephen.cheryl@co.la-crosse.wi.us

Phone: (608) 785-9581 Email: countyclerkoffice@co.la-crosse.wi.us

STANDING COMMITTEE STRUCTURE

Standing Committees/Boards shall act as the policy oversight committee for the following departments.

EXECUTIVE COMMITTEE

County Administrator
 Corporation Counsel and Child Support Agency
 County Clerk

Finance
 Information Technology
 Personnel
 Treasurer
 Printing

AGING AND LONG TERM CARE COMMITTEE

Hilview Health Care Center
 Carroll Heights
 Lakeview Health Center
 Veterans Services
 Aging

HEALTH AND HUMAN SERVICES BOARD

Human Services
 Health

JUDICIARY AND LAW COMMITTEE

Clerk of Courts
 Family Court Commissioner
 District Attorney
 Emergency Services
 Medical Examiner
 Sheriff

Mediation and Family Court Services

PLANNING RESOURCES AND DEVELOPMENT COMMITTEE

Land Conservation
 Zoning, Planning and Land Information
 Register of Deeds
 County Surveyor
 University Extension

PUBLIC WORKS AND INFRASTRUCTURE COMMITTEE

Facilities
 Highway
 Solid Waste

STANDING COMMITTEES AND BOARDS

COMMITTEE WEEK

SHALL BE THE WEEK BEFORE THE COUNTY BOARD MEETS
ALL STANDING COMMITTEES and BOARDS MEET MONTHLY

These dates & times could vary for special circumstances.

Please check the agenda at: <http://www.co.la-crosse.wi.us/Minutes%20and%20Agendas/MinAgsIndex.htm>
Or the Meeting Calendar at: <http://www.co.la-crosse.wi.us/Minutes%20and%20Agendas/04Comm.pdf>

For any Special Meetings or possible changes due to Holidays or other conflicts.

EXECUTIVE COMMITTEE

3:00 p.m. Monday of Committee Week

Steve Doyle, Chair
Sharon Mahlum
Ralph Geary Jr.
Vicki Burke
Tara Johnson
Mark Johnson
Janice Keil
Roger Plesha
Charles Spiker

JUDICIARY AND LAW COMMITTEE

1:30 p.m. Tues of Committee Week

Vicki Burke, Chair
Keith Belzer
Joe Bilskemper
Artn Fisher
Karl Halverson
Bernie Maney
Gerald Sebranek

AGING AND LONG TERM CARE COMMITTEE

9:00 a.m. Monday of Committee Week

Roger Plesha, Chair
James Ehrsam
George Hammes
Shirley Holman
Audrey Kader
Lyell Montgomery
Jeffrey Schroeder

PLANNING, RESOURCES

AND DEVELOPMENT COMMITTEE

9:00 a.m. Monday 2 Wks before 3rd Thurs

6:00 p.m. Public Hearing (Same day)

Janice Keil, Chair
Donald Bina
J. Terry Hanson
Brian Kapanke
Sharon Mahlum
Don Meyer
Charles Spiker
David Hansen, FSA Rep.

HEALTH AND HUMAN SERVICES BOARD

6:30 p.m. Tues of Committee Week

Tara Johnson, Chair
Jill Billings
Bill Schultz
Tong Ly
Sharon Hampson
Margaret Wood
Anita Froegel – citizen
Loren Kannenberg – citizen
James Glasser, MD

PUBLIC WORKS AND INFRASTRUCTURE COMMITTEE

4:00 p.m. Monday of Committee Week

Mark Johnson, Chair
Arlene Benrud
Jim Berns
Ralph Geary Jr.
Mitzi Parr
Leon Pfaff
Andrea Richmond

← RETURN TO INDEX

SPECIAL COMMITTEES, BOARDS AND COMMISSIONS

**BOARD OF ADJUSTMENT
(Zoning)**

Walter Gilbert, Chair.
Howard Raymer Jr.
Robert Mullally
David Eilertson, 1st alternate
Barbara Frank, 2nd alternate

BOARD OF HARBOR

COMMISSIONERS

John Noyes, Chair
Don Meyer
Clyde Benjamin
Joel Clark
Marc Schultz
Wayne Oliver
Thomas Lynch

COMMISSION ON AGING

Charles Spiker, Chair
Lyell Montgomery
Shirley Holman
Lois Nelson
Thomas Padesky
Lyle Ostrander
Dr. Edward Miner

**COMMISSION ON EQUAL
OPPORTUNITIES IN HOUSING**

Sharon Hampson, Chair
Lyell Montgomery
Robert Machotka
Tom Hutchison
Ron Boenigk

COMMITTEE OF THE WHOLE

All 35 County Board Supervisors

CONDEMNATION COMMISSION

William Kirkpatrick
Donald Johnson
Christ Meseloras
Peter Skemp
Mark Schneider
Richard Dineen
Al Trapp
Vacancy
Vacancy

CRIMINAL JUSTICE

MANAGEMENT COUNCIL

Richard Swantz, Chair
Steve Doyle
Vicki Burke
Gerald Sebranek
Keith Belzer
Bill Hammes
Scott Home
Jerry Huber
Elliott Levine
Dennis Montabon
Mike Weissenberger
Ed Kondracki
Ann Quinlisk
Richard Kyte
Kimberly Vogt
Jim Nesbitt
Margaret Larson
Dr. Tom Trannel

**ECONOMIC DEVELOPMENT
COMMITTEE**

Audrey Kader, Chair
James Ehrsam
Vicki Burke
Jim Berns
Luke Naegele
Barry Bertelsen
Jan Gallagher
Bob Brown
Keith Carson

PUBLIC SAFETY

COMMUNICATIONS BOARD

Chief Randy Williams, Chair
Chief Scott Alo, Vice Chair
Chief Peter Stinson, Secretary
Chief Paul Menches
Chief Edward Kondracki
Chief Randy Roeck
Sheriff Mike Weissenberger
Steve O'Malley
Vicki Burke
Eric Voter, MD
Bruce Ranis

**EMERGENCY MEDICAL
SERVICES BOARD**

Janice Keil, Chair
Karl Halverson
Sharon Hampson
Bernie Maney
Vicki Burke
Lois Nelson
Robert Machotka
Bernard DeFlorian
Jim Sciborski

ETHICS BOARD

Roland Solberg
Lynn Valiquette
Rev. Thomas O'Neill
Steve Mader, 1st alternate
Judy Bower, 2nd alternate

HIGHWAY SAFETY

COMMISSION

Sgt William Lubinski, Chair
Andrew Winga
Alternate-John Mueller
Tim Hammes
Alternate - Dennis Osgood
Jeff Radtke

Michael Weissenberger

Alternate-Steve Helgeson
Ronald Oleson
Alternate-Patrick Caffey
Roland Solberg
Ilona Hansen
Jeff Smith
John Flynn
Timothy Berg
Dr. R. W. Ellwein
Al Blencoe
Randy Rank, LCPD

HISTORIC SITES

PRESERVATION COMMISSION

Vicki Twinde-Javner, Chair
Sharon Mahlum
Brenda Jordan
Harriet Schuppel
H. King Holley
Barbara Kooiman
Richard Bedessem

← RETURN TO INDEX

SPECIAL COMMITTEES, BOARDS AND COMMISSIONS

(Continued)

**LA CROSSE COUNTY
BUSINESS FUND, INC.**

Steve Doyle, Chair
Steve O'Malley, Vice Chair
Audrey Kader
Sharon Mahlum
William Shepherd
Gary Ingvalson
Judy Fuchsteiner
Mary Jo Werner
Barry Bertelsen
Jim Petersen
Ray Sundet
Don Brenegen
Ralph Geary Jr

LA CROSSE COUNTY HOUSING

AUTHORITY
Jim Sciborski
Betty Woodruff
Dan Wee
Joe Bilskemper
Karen Kay Hadley

LIBRARY BOARD

Loren Caulum, Chair
Arlene Benrud
Mary Filla
Fred Marini
George Varnum
Glenn Seager
Jamie Skjeveland

**WILDLIFE ABATEMENT/
DAMAGE COMMITTEE**

Carl Mueller, Chair
Stan Tyler
Francis Brown
Leon Pfaff

**LOCAL EMERGENCY PLANNING
COMMITTEE**

Pat Smith, Chair
Vicki Burke
Jeanette Lenser
Dick Matushek
Peter Stinson
Marc Schultz
Mike Horstman
Robert Mulliner
Phil Niemer
Sue Kunz
Pat Caffrey
Jennifer Shilling
Tom Wright
Lois Losby
Keith Butler
Franz Fredricks

SOLID WASTE POLICY BOARD

J. Terry Hanson
Shirley Holman
Mark Johnsrud
Jason Gilman
John Stortie Jr.
Steve Hogden
Pete Reister
Lamoine Parkhurst
Vacancy

**VETERANS SERVICE
COMMISSION**

Alfred Schulze, Chair
Carl Sjolander
Michael Sevallius
Vacancy

OTHER ORGANIZATIONAL APPOINTMENTS

AVIATION BOARD

Brian Kapanke

COULEECAP, INC.

Ann Fisher
Gerald Sebranek

HIDDEN VALLEYS

Audrey Kader

**LA CROSSE AREA
DEVELOPMENT CORP
(LADCO)**

Audrey Kader

**LA CROSSE COUNTY
AGRICULTURAL SOCIETY**

Janice Keil

**LAKE NESHONOC
PROTECTION AND
REHABILITATION DISTRICT**

Donald Bina

**LAKE ONALASKA
PROTECTION AND
REHABILITATION DISTRICT**

Vicki Burke

**MISSISSIPPI RIVER REGIONAL
PLANNING COMMISSION**

James Ehrsam
Janice Keil
Vicki Burke

SOCIAL JUSTICE COALITION

Sharon Hampson

**SOUTHWEST BADGER
RESOURCE CONSERVATION
AND DEVELOPMENT (SWRCS)**

Donald Bina
Marc Schultz, alternate

**SOUTHWEST
INTERNATIONAL TRADE,
BUSINESS AND ECONOMIC
DEVELOPMENT COUNCIL
(ITBEC)**

James Ehrsam
Audrey Kader

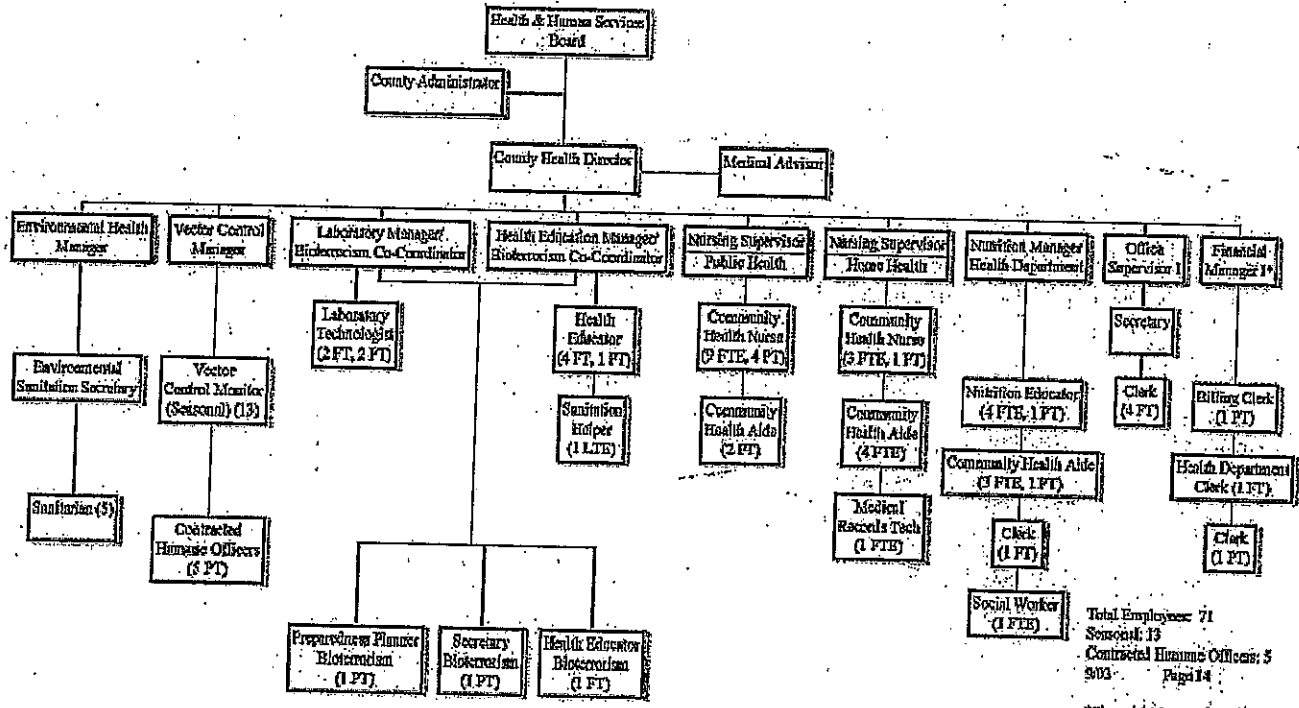
**WINDING RIVERS LIBRARY
SYSTEM**

Sharon Hampson
Linda Sherwood
Mary Garves
Tom Rauh
Loren Caulum
Mary E. Larson
Vern Olson

**WISCONSIN COUNTIES
UTILITY TAX ASSOCIATION**

James Ehrsam

LA CROSSE COUNTY HEALTH DEPARTMENT



Total Employees: 71
 Seasonal: 13
 Contracted Humane Officers: 5
 9003 Page 14

*Financial Manager is assigned to the Finance Dept. but performs work in the Health Dept.

SECTION TAX 11.05
WISCONSIN ADMINISTRATIVE CODE

At -
Dues
pleased
#97847

✓
✓
✓

Tax 11.05 Governmental units. (1) **GENERAL.** Sales by the state of Wisconsin, any agency thereof and governmental units within this state are generally subject to the Wisconsin sales tax. However, sales by the United States government or any agency thereof are not taxable.

(2) **TAXABLE RECEIPTS.** Taxable receipts of governmental units include gross receipts from the following:

(a) Admissions to recreational facilities.

Example: Green fees, camp ground fees, swimming fees, ice skating fees and park shelter house fees are taxable.

(b) Food and gift stand sales, including sales of sandwiches, beverages, candy, cigarettes, ice cream, confections, tobacco products, postcards, books, magazines and other periodicals described in s. Tax 11.19, and novelties. Newspaper sales are exempt.

(c) Sales or rental of recreational equipment and supplies.

(d) Charges for access to or use of athletic facilities, such as baseball and softball diamonds, stadiums and gymnasiums, including entry fees.

(e) Sales of electricity, gas and steam by municipal utilities, except as provided in sub. (3) (b).

(f) Sales of maps, plat books, photocopiers or other printed material, except as provided in sub. (3) (p).

(g) Sales or rental of equipment and office furniture, including the rental of motor vehicles to employees. Governmental units may not collect tax on their sales of motor vehicles. Instead, the purchaser shall pay the tax to the department of transportation when the motor vehicle is registered.

(h) Sales of buildings or timber when the purchaser acquires the property for removal.

(i) Rental of lodging facilities to any person residing for a continuous period of less than one month, except that the tax does not apply to the receipts from accommodations furnished by any hospitals, sanatoriums, nursing homes, colleges or universities operated by governmental units.

(j) Vending machines and amusement devices, if the governmental unit owns the machine or has control over the gross receipts from the machine and its contents.

(k) Sales of soda water beverages, fermented malt beverages and intoxicating liquor, including sales of these items by hospitals, sanatoriums, nursing homes, retirement homes, community-based residential facilities as defined in s. 50.01 (1g), Stats., and day care centers under ch. 48, Stats., to patients, employees or guests.

(l) Charges for meals to "Huber" law prisoners.

(m) Sales of books and supplies, including sales by technical college districts. Sales of tangible personal property by elementary and secondary schools are exempt under s. 77.54 (4), Stats.

(n) Sales of craft supplies for playground craft programs.

(o) Auction sales of tangible personal property, but excluding motor vehicles as provided in par. (g).

(p) Sales and delivery of trees, shrubs or gravel to private purchasers.

(q) Sales of impounded animals, even though the amount received may be designated as a placement fee.

(r) The gross receipts from parking and providing parking space for motor vehicles and aircraft, and docking or providing storage space for boats.

(s) The gross receipts from landscaping and lawn maintenance services, including weed cutting in lawn and garden areas and along highways, streets and walkways, but not charges for damages described in sub. (3) (c).

(3) **NONTAXABLE RECEIPTS.** Gross receipts of governmental units from the following are not taxable:

(a) Fees for licenses and permits, including tavern, cigarette, hunting and fishing, marriage, building and septic tank permits and I.D. cards, but not camping permits or I.D. cards issued exclusively for obtaining admission to facilities or events taxed under s. 77.52 (2) (a) 2., Stats.

(b) Water delivered through mains. Wood residue used for fuel and sold for use in a business activity. Coal, fuel oil, propane, steam, peat, fuel cubes produced from solid waste and wood used for fuel, sold for residential use. Electricity and natural gas sold for residential use and electricity sold for farm use during the months of November through April. Fuel sold for use in farming. "Sold" is defined in s. 77.54 (30) (b), Stats. In this paragraph, "residential use" has the meaning in s. Tax 11.57 (2) (L) 7.

(c) Claims assessed against persons for damaging government property.

(d) Rental of buildings or space, such as offices, warehouses and meeting rooms.

(e) Storage fees, notary public fees and bid deposits.

(f) Library fines, including charges for books that are not returned or charges for a duplicate library card.

(g) Police escort and ambulance service charges.

(h) Separately stated fees for instruction.

(i) Special assessments and fees for garbage or trash removal. However, sales of bags or receptacles for garbage or trash are taxable unless a combined charge is made for removal and bags or receptacles and the amount allocated to the bag or receptacle is incidental to the charge for removal.

Example: A city government provides that in order to have trash removed by the city, the trash must be put in special bags which are sold for \$1 each. The \$1 charge is allocated as follows: 18¢ for the bag, 42¢ for removal and 40¢ for cost of the disposal site. The \$1 charge for the bag is not subject to tax because the transfer of the bag is incidental to the sale of the waste removal service.

(j) Commissions on vending machines or amusement devices when the governmental unit does not own the machines or have control of the machines' gross receipts and contents.

(k) Sales or rental of tangible personal property or services in other governmental units, schools or organizations which hold a certificate of exempt status.

NOTE: This administrative rule has been promulgated by the Wisconsin Department of Revenue in accordance with Ch. 227, Wis. Stats. An administrative "rule," as defined in sec. 227.01(13), Wis. Stats., means "a regulation, standard, statement of policy or general order of general application which has the effect of law and which is issued by an agency to implement, interpret or make specific legislation enforced or administered by such agency or to govern the organization or procedure of such agency."

A complete booklet of Department of Revenue administrative rules and a service to keep the booklet current is available on a subscription basis from the Wisconsin Department of Administration. To subscribe, write to the Department of Administration, Document Sales, P.O. Box 7840, Madison, WI 53707-7840.

Continuation of Section Tax 11.05

(L) Meals, food, food products or beverages, except soda water beverages, fermented malt beverages and intoxicating liquor, sold by hospitals, sanatoriums, nursing homes, retirement homes, community-based residential facilities as defined in s. 50.01 (1g), Stats., and day care centers under ch. 48, Stats., on their premises to patients, employees, residents or guests; meals furnished in accordance with any contract or agreement by a public institution of higher education, including dormitory meals; and meals sold to the elderly or handicapped by "mobile meals on wheels."

(m) Service charges for snow removal, police officers at social gatherings, service of legal papers including summons, complaints and civil process, and ushers and door guards.

(n) Sales for resale, if supported by a valid resale certificate obtained from the purchaser.

(o) Fees charged for admission to a university student union building.

(p) Charges for filing, entering, docking, recording or furnishing certified or uncertified copies of records by a state registrar, register of deeds, health officer and clerk of court under ss. 59.42, 59.57 and 69.22, Stats., or by a filing officer under s. 409.407 (2), Stats., and fees charged by a register in probate pursuant to s. 814.66, Stats. Also, charges by an "authority," as defined in s. 19.32 (1), Stats., for copying a record under s. 19.35 (1) (a), Stats., including charges for a search of records.

(q) The sale of all admission fees or admission stickers to state parks and recreational areas in state forests imposed under s. 27.01 (7), (8) and (9), Stats.

(r) Camping fees in Wisconsin state parks imposed under s. 27.01 (10) (d), Stats.

(s) Admissions to any museum operated by a nonprofit corporation under a lease agreement with the state historical society.

(t) Gross receipts from telecommunications revenues collected in establishing a "911" emergency telephone system under s. 146.70 (3), Stats.

(u) Animal identification tags and standard samples representing product or commodity grades only when sold by the Wisconsin department of agriculture, trade and consumer protection.

(4) PURCHASES. (a) Section 77.54 (9a), Stats., exempts sales to and the storage, use or other consumption of tangible personal property and services by Wisconsin or by any agency thereof, or any Wisconsin county, city, village, town, school district, county-city hospital established under s. 66.47, Stats.; sewerage commission organized under s. 281.43 (4), Stats.; metropolitan sewerage district organized under ss. 66.20 to 66.26 or 66.88 to 66.918, Stats.; local exposition district under subch. II of ch. 229, Stats.; university of Wisconsin hospitals and clinics authority or any other unit of government, or any agency or instrumentality of one or more units of government within Wisconsin. However, the exemption does not apply to governmental units of other states or hospital service insurance corporations under s. 613.80, Stats.

Note: Refer to s. Tax 11.04 regarding the purchase of building materials used in the construction of buildings for governmental units.

(b) A Wisconsin governmental unit shall provide one of the following to a retailer as proof that a sale to the governmental unit is exempt from tax:

1. A purchase order or similar written document identifying the governmental unit as the purchaser.

2. An exemption certificate, form S-207 or S-209.

Note: Form S-207, Certificate of Exemption, and Form S-209, Government Sales and Use Tax Exemption Certificate, are available from any Department of Revenue office.

(c) A Wisconsin governmental unit's payments to retailers for welfare recipients' purchases are generally subject to the tax, except when the purchase is made directly by the governmental unit and all 3 of the following conditions apply:

1. The governmental unit gives the retailer a purchase order.

2. The retailer issues the billing or invoice for the purchases in the name of the governmental unit.

3. The retailer keeps a copy of the governmental unit's purchase order and the retailer's billing or invoice to substantiate that the sale was exempt from sales and use tax.

Example: A governmental unit intends to purchase clothing for a welfare recipient. The governmental unit gives a purchase order to the retailer and the retailer makes the invoice out to the governmental unit. The sale is not subject to sales tax if the welfare recipient pays the retailer with funds given to the recipient by the governmental unit or if the governmental unit pays the retailer directly.

(d) Purchases by state chartered credit unions are subject to the tax. Purchases by federally chartered credit unions and federal reserve banks are not subject to the tax.

(e) Purchases, including lodging, meals or uniforms, by employees of a governmental unit are not exempt, whether or not the employee is subsequently reimbursed for the purchases by the governmental unit, unless the retailer issues the billing or invoice in the name of the governmental unit, receives from the governmental unit a document as described in par. (b) and keeps a copy of both documents.

(f) Purchases by consular and diplomatic personnel of other countries which have entered into multilateral treaties with the United States government providing for sales and use tax exemptions are exempt provided the personnel present their tax exemption card issued by the United States department of state showing their tax exemption number.

Note: Section Tax 11.05 interprets ss. 77.51 (4) (c) & and (10), 77.52 (2) (a) 1., 2., 9. and 20., (13) and (14) and 77.54 (9a), (10), (15), (17), (20), (30), (32), (37) and (42), Stats.

Note: The interpretations in s. Tax 11.05 are effective under the general sales and use tax law on and after September 1, 1969, except: (a) Sales by vocational, technical and adult education schools were exempt from July 1, 1972, through October 3, 1973; (b) Mobile meals on wheels became exempt October 4, 1973, pursuant to Chapter 90, Laws of 1973; (c) Admission fees to state parks became exempt on July 1, 1978, pursuant to Chapter 418, Laws of 1977; (d) Sales of coal, fuel oil, propane, steam and wood used for fuel became exempt July 1, 1979, and the electricity and natural gas six-month exemption became effective on November 1, 1979, both pursuant to Chapter 1, Laws of 1979; (e) A governmental unit's charges for parking motor vehicles and aircraft and docking and providing storage space for boats became taxable June 1, 1980, pursuant to Chapter 221, Laws of 1979; (f) Landscaping and lawn maintenance services became taxable on May 1, 1982, pursuant to Chapter 317, Laws of 1981; (g) A governmental unit's charges for copying public records became exempt effective April 27, 1984, pursuant to 1983 Wis. Act 287, later amended effective April 2, 1986, pursuant to 1985 Wis. Act 149 to clarify that the exemption also applies to confidential records, and again amended effective May 1, 1992, pursuant to 1991 Wis. Act 269, to include records under s. 19.35 (1) (a), Stats.; (h) The exemption for pest and fuel cubes produced from solid waste became effective April 2, 1986, pursuant to 1985 Wis. Act 149; (i) The exemption for an agency or instrumentality of a Wisconsin governmental unit became effective June 1, 1986, pursuant to 1985 Wis. Act 149; (j) Wood residue used for fuel by businesses became exempt on September 1, 1987, pursuant to 1987 Wis. Act 27; (k) The exemption for admissions to a museum operated by a nonprofit corporation under lease with the state historical society became exempt July 26, 1985, pursuant to 1985 Wis. Act 29; (l) The exclusion of hospital service insurance corporation from the definition of exempt entity became effective September 1, 1985, pursuant to 1985 Wis. Act 29; (m) Revenue from establishing a "911" emergency telephone system became exempt August 1, 1987, pursuant to 1987 Wis. Act 27; (n) State park camping fees became exempt effective September 1, 1989, pursuant to 1989 Wis. Act 31; (o) The exemption for animal identification tags and standard samples by the Wisconsin department of agriculture, trade and consumer protection became effective October 4, 1993, pursuant to 1993 Wis. Act 16; (p) The exemption for fuel used in farming became effective October 1, 1991, pursuant to 1991 Wis. Act 39; (q) The requirement that meals must be served on the premises of hospitals, nursing homes, etc., for exemption to apply became effective October 1, 1991, pursuant to 1991 Wis. Act 39; (r) The exemption for sales to a local exposition district became effective April 26, 1994, pursuant to 1993 Wis. Act 263; (s) The exemption for sales of meals by community-based residential facilities became effective June 1, 1994, pursuant to 1993 Wis. Act 312; and (t) The exemption for sales to the University of Wisconsin Hospitals and Clinics Authority became effective July 29, 1995, pursuant to 1995 Wis. Act 27.

History: Cf. Register, December, 1977, No. 264, eff. 1-1-78; am. (3) (f) and (h), (4) (c) and (e), Register, August, 1979, No. 284, eff. 9-1-79; am. (2) (c) and (i), or (2) (r), r. and rec. (3) (b), Register, January, 1983, No. 325, eff. 2-1-83; am. (2) (b) and (m), (3) (k), (l), (m) and (p), or (2) (s) and (3) (q), Register, September, 1984, No. 345, eff. 10-1-84; am. (3) (p), Register, July, 1987, No. 379, eff. 8-1-87; reprinted to correct error in (2) (p), Register, October, 1987, No. 382; am. (3) (b) and (4) (invo.), Register, June, 1990, No. 414, eff. 7-1-90; am. (2) (a), (d), (i), (k) and (o), (3) (l), (l), (p) and (q), and (4) (invo.), (d) and (e), or (3) (r), (s) and (i), r. and rec. (4) (b), Register, June, 1991, No. 428, eff. 7-1-91; am. (3) (p), rem. (4) (invo.), (2) (c) to be (4) (a) to (f), Register, April, 1993, No. 448, eff. 5-1-93; am. (2) (f) and (2) (3) (L), (4) (c) (invo.), 1. and 2., or (3) (u), Register, April, 1994, No. 460, eff. 5-1-94; reprinted to restore dropped copy in (2) (g) and correction made in (4) (a) under s. 15.93 (2m) (b) 7., Stats., Register, October, 1996, No. 490; am. (2) (s), eff. 5-18-97; am. (2) (h), (k), (m), (l), and (4) (k), (e), r. and rec. (4) (b), Register, October, 1997, No. 502, eff. 11-1-97.